



**Seawater
Reverse Osmosis (RO) Membranes
LG SW 440 GR**

Overview

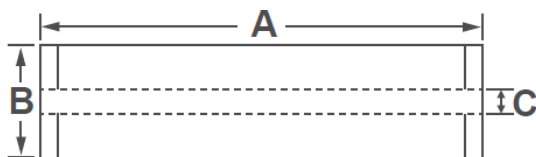
LG Chem's NanoH₂O™ seawater RO membranes, incorporated with innovative Thin Film Nanocomposite (TFN) technology, reduce the cost of desalination while delivering superior water quality. Our seawater RO membranes provide industry leading salt rejection and produce 20% more flow than membranes manufactured with conventional technologies. We continue to leverage the technological advantages of our seawater RO membranes to expand our market share, accruing more than 3,000 Million Liter per Day (MLD) projects for both new and replacement market since the establishment.

LG SW GR (Great Rejection) membranes offer a combination of high rejection and low energy requirements to reduce the total cost of desalination; suitable for high salinity seawater applications.

Product Specifications

Active Membrane Area, ft ² (m ²)	Permeate flow rate, GPD (m ³ /d)	Stabilized Salt Rejection, %	Minimum Salt Rejection, %	Boron Rejection, %	Feed Spacer, mil
440 (41)	8,250 (31.2)	99.85	99.7	93	28

Test Conditions : 32,000 ppm NaCl, 5 ppm boron at 25°C (77°F), 800 psi (55 bar), pH 8, Recovery 8%.
Permeate flows for individual elements may vary +/-15%.



A, mm (in.)	B, mm (in.)	C, mm (in.)	Weight, kg (lbs.)
1,016 (40)	200 (7.9)	28.6 (1.125)	16 (35)

All dimensional information is indicative and for reference purpose only. Please contact LG Chem for detailed technical specification.

Operating Specifications

Max. Applied pressure	1,200 psi (82.7 bar)
Max. Chlorine concentration	< 0.1 ppm
Max. Operating temperature	45°C (113°F)
pH Range, Continuous (Cleaning)	2-11 (2-13)
Max. Feedwater turbidity	1.0 NTU
Max. Feedwater SDI (15 mins)	5.0
Max. Feed flow	75 gpm (17 m ³ /h)
Min. Ratio of concentrate to permeate flow for any element	5 : 1
Max. Pressure drop (ΔP) for each element	15 psi (1.0 bar)

The information and data contained herein are deemed to be accurate and reliable and are offered in good faith, but without guarantee of performance. LG Chem assumes no liability for results obtained or damages incurred through the application of the information contained herein. Customer is responsible for determining whether the products and information presented herein are appropriate for the customer's use and for ensuring that customer's workplace and disposal practices are in compliance with applicable laws and other governmental enactments. Specifications subject to change without notice. NanoH₂O is the Trademark of The LG Water Solutions or an affiliated company of LG Chem. All rights reserved. © LG Chem, Ltd.